

JEFFERSON COUNTY DRAINAGE DISTRICT NO. 6

“MAY 17, 2021 FLOOD UPDATE”

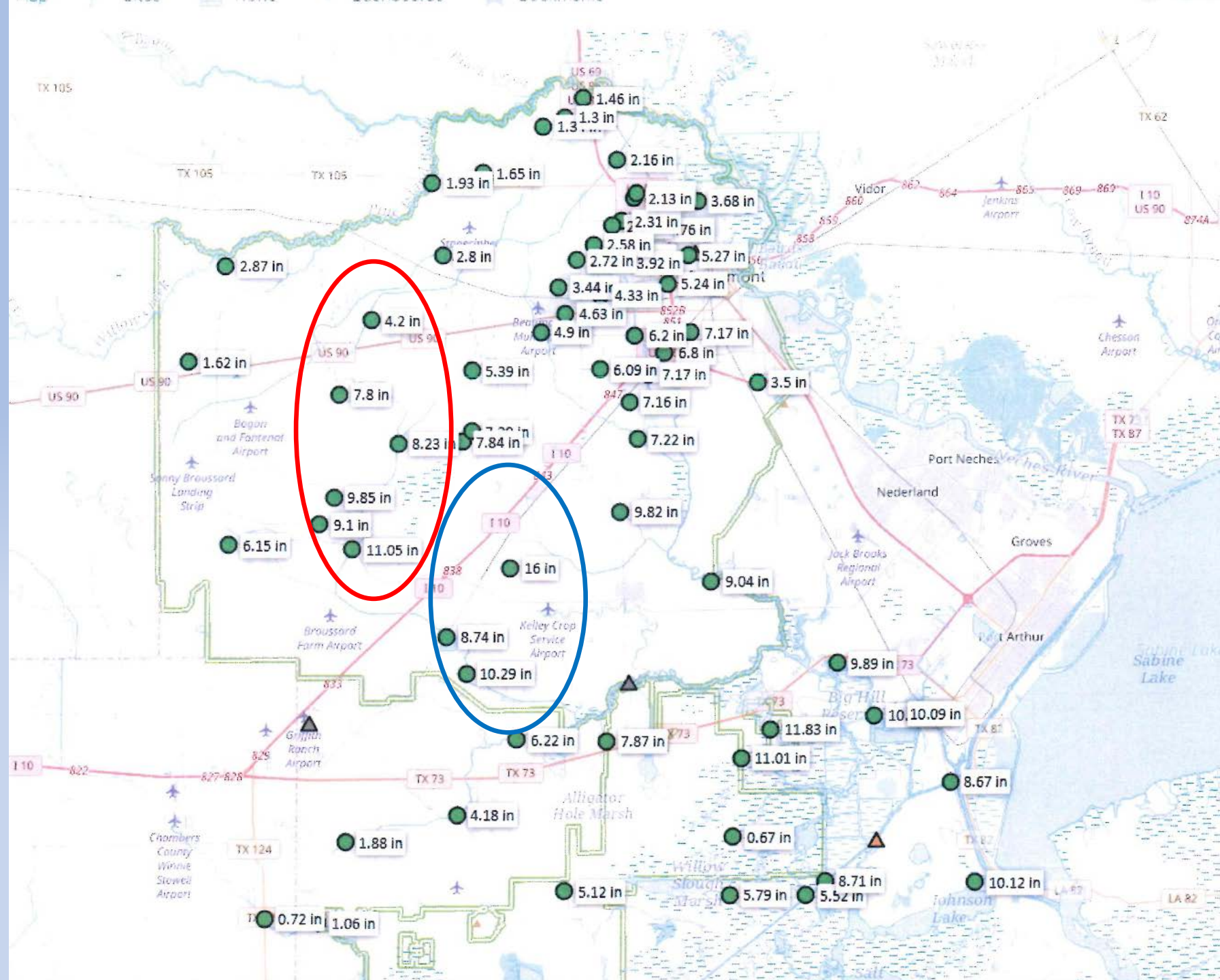


PRESENTED BY: DR. JOSEPH G. MAJDALANI, P.E., C.F.M.
GENERAL MANAGER

MAY 17, 2021 RAIN EVENT

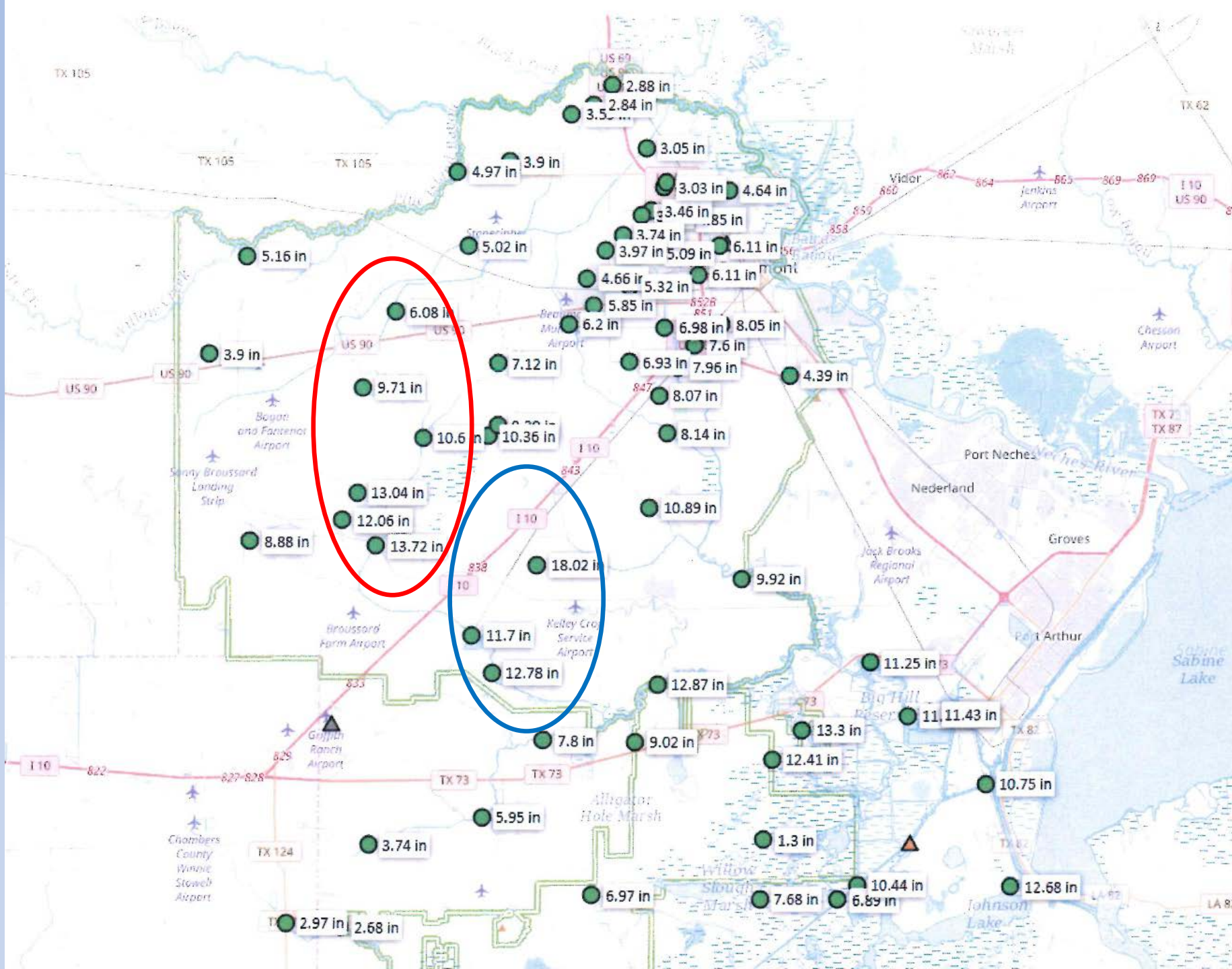
- STARTED MAY 17
- ENDED MAY 19
- RANGES OF PRECIPITATION IN CHINA & GREEN POND AREAS
 - 12-HOUR (4.2 IN - 11.05 IN)
 - 24-HOUR (6.08 IN -13.72 IN)
 - TOTAL (8.42 IN -16.27 IN)
- RANGES OF PRECIPITATION IN FANNETT / GREEN ACRES
 - 12-HOUR (8.74 IN – 16.00 IN)
 - 24-HOUR (11.70 IN -18.02 IN)
 - TOTAL (12.96 IN -18.68 IN)

- 12-HOUR

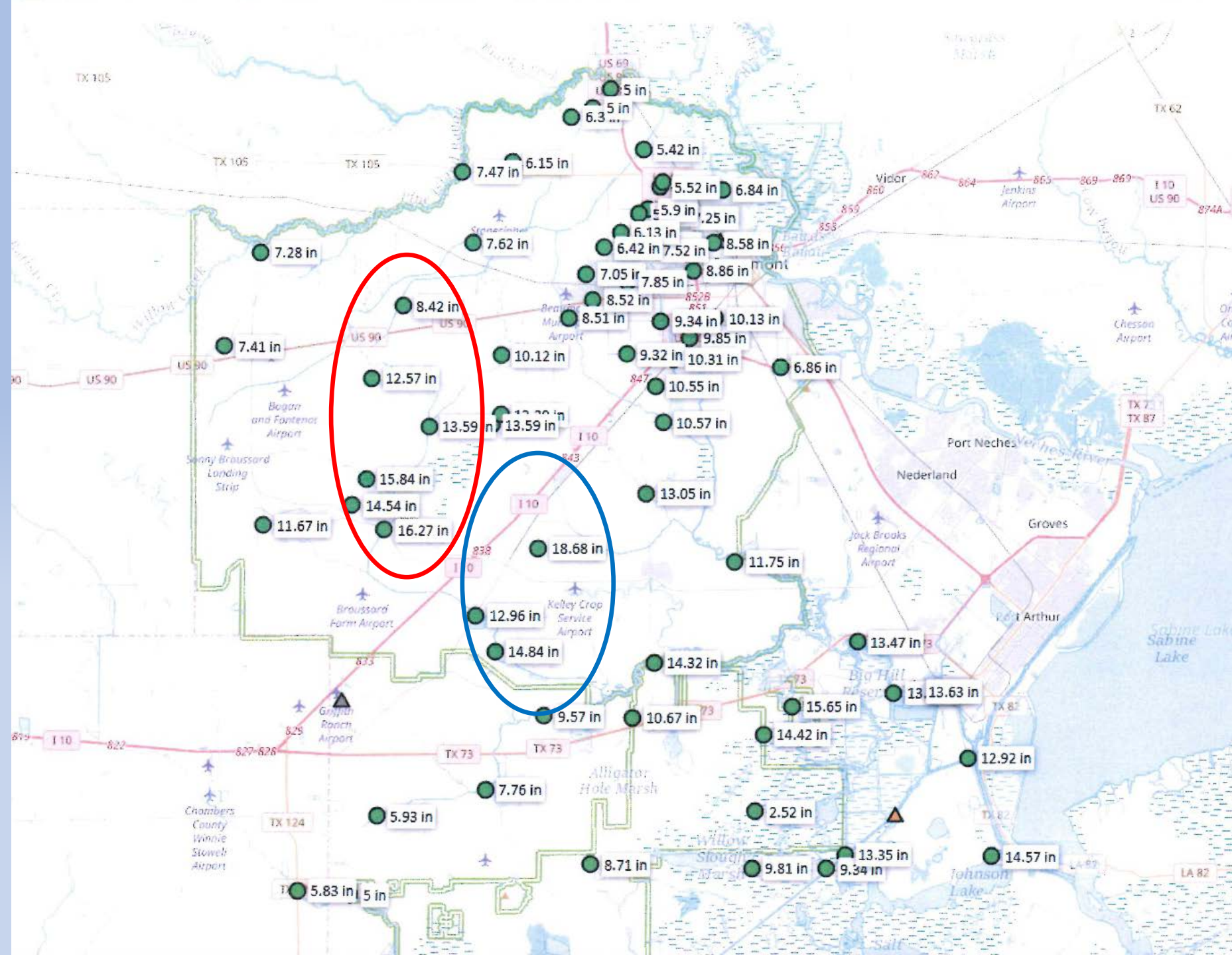


RAIN INCREMENT

- 24-HOUR



- 7-DAY



GREEN POND DETENTION — 5/18/2021 day after the storm

WATER CONTROL STRUCTURE

- DISTRICT'S LEVEL GAUGE READ 23.4
- WATER FLOWS OVER THE STRUCTURE AT ELEVATION 23.0
- DETENTION POND COMPLETELY FULL AND FLOWING OVER THE LONG SPILLWAY



GREEN POND DETENTION — 5/18/2021

DITCH 602 — NORTH CHEEK OUTFALL

- NORTH END OF GREEN POND DETENTION
AT ELEVATION 24.2
- CHINA AND DIAMOND “D” RANCH ARE DRY



GREEN POND DETENTION — 5/18/2021

DITCH 602 AT DITCH 600 — NORTH CHEEK OUTFALL

- NORTH END OF GREEN POND DETENTION
AT ELEVATION 24.2
- CHINA AND DIAMOND “D” RANCH ARE DRY



GREEN POND DETENTION — 5/18/2021

DITCH 607 AT DITCH 600

- WATER FLOWING SOUTH
AT ELEVATION 24.8



GREEN POND DETENTION — 5/18/2021

DITCH 608 AT DITCH 600

- WATER FLOWING SOUTH



GREEN POND DETENTION — 5/18/2021

DITCH 600 AT DIAMOND “D” DETENTION BASIN OUTFALL

- WATER FLOWING SOUTH



GREEN POND DETENTION — 5/18/2021

DITCH 600 AT DIAMOND “D” RANCH

- WATER FLOWING SOUTH



GREEN POND DETENTION — 5/18/2021

DITCH 600 AT BOGAN RANCH ESTATES

- GREEN POND DETENTION IS FULL
- NO FLOODING



GREEN POND DETENTION — 5/18/2021

DITCH 600 — NORTH CHINA (TURNER ROAD & WESTWARD)

- GREEN POND DETENTION BASIN IS FULL
- DITCH 600 IS LOW - FIELD IS FLOODED
- CHINA IS DRY



GREEN POND DETENTION — 5/18/2021

DITCH 600 IN NORTH CHINA

- GREEN POND DETENTION IS FULL
- DITCH 600 IS LOW/EMPTY



DITCH 609 AT S. BROADWAY (S. CHINA ROAD)

- WATER IS HELD BY UNMAINTAINED CITY ROADSIDE DITCHES
- WATER IN THE STREET IS 4 FEET HIGHER THAN THE WATER IN OUTFALL DITCH 609



DITCH 609 AT S. BROADWAY (S. CHINA ROAD)



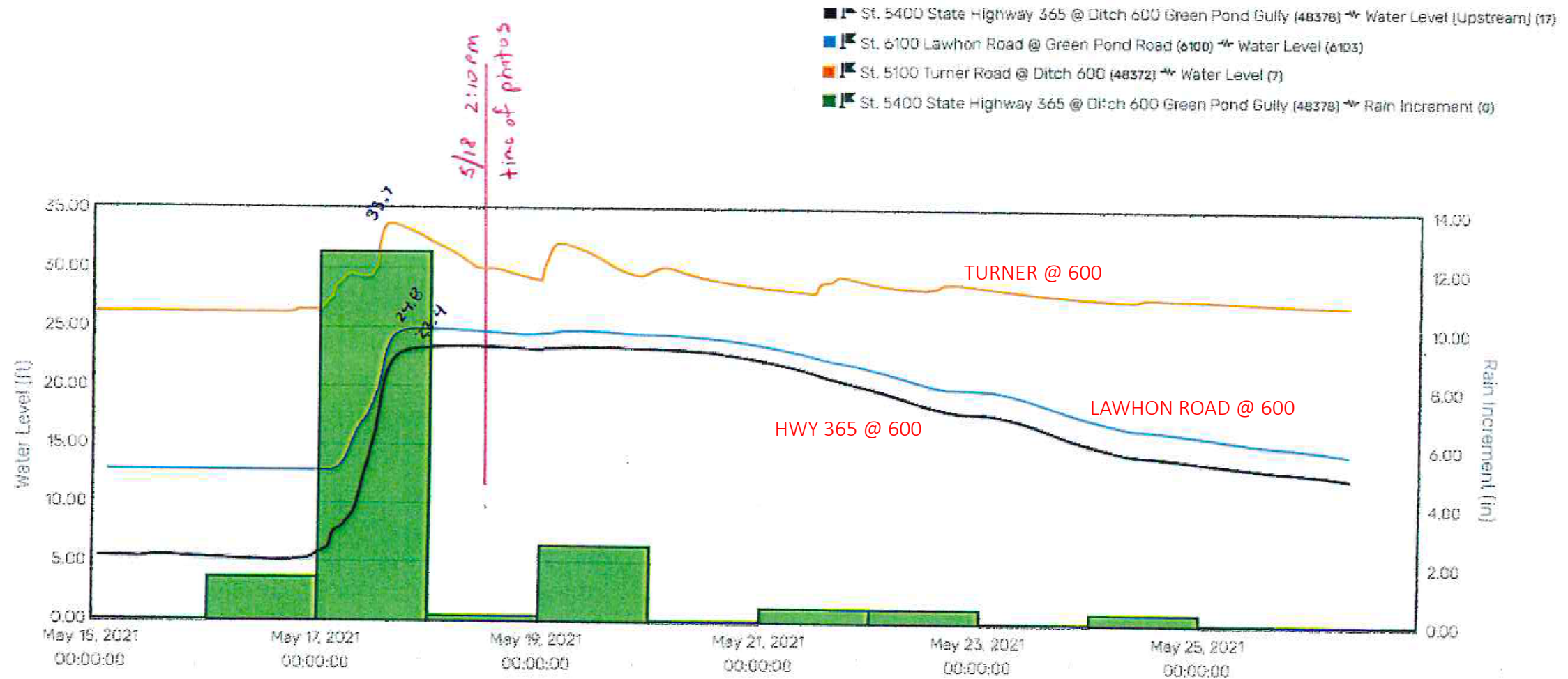
DITCH 609 AT S. BROADWAY (S. CHINA ROAD)

- WATER IS HELD BY UNMAINTAINED CITY ROADSIDE DITCHES
- WATER IN THE STREET IS 4 FEET HIGHER THAN THE WATER IN OUTFALL DITCH 609



GREEN POND GULLY – DITCH 600

WATER LEVEL / RAINFALL GRAPH



PROJECTS IN THE CHINA AREA - RECENTLY COMPLETED, UNDER CONSTRUCTION & PLANNED

COMPLETED

- 1,800' ALL-WEATHER LEVEE – ELEVATION 27.5
- 1,500' EMERGENCY SPILLWAY – ELEVATION 25.0
- CONCRETE SPILLWAY – ELEVATION 23.2
- CONTROL STRUCTURE/SPILLWAY – ELEVATION 23.0, (72" PIPE FL=2.0, 2-9'X9' BOXES FL=11.5)

UNDER CONSTRUCTION

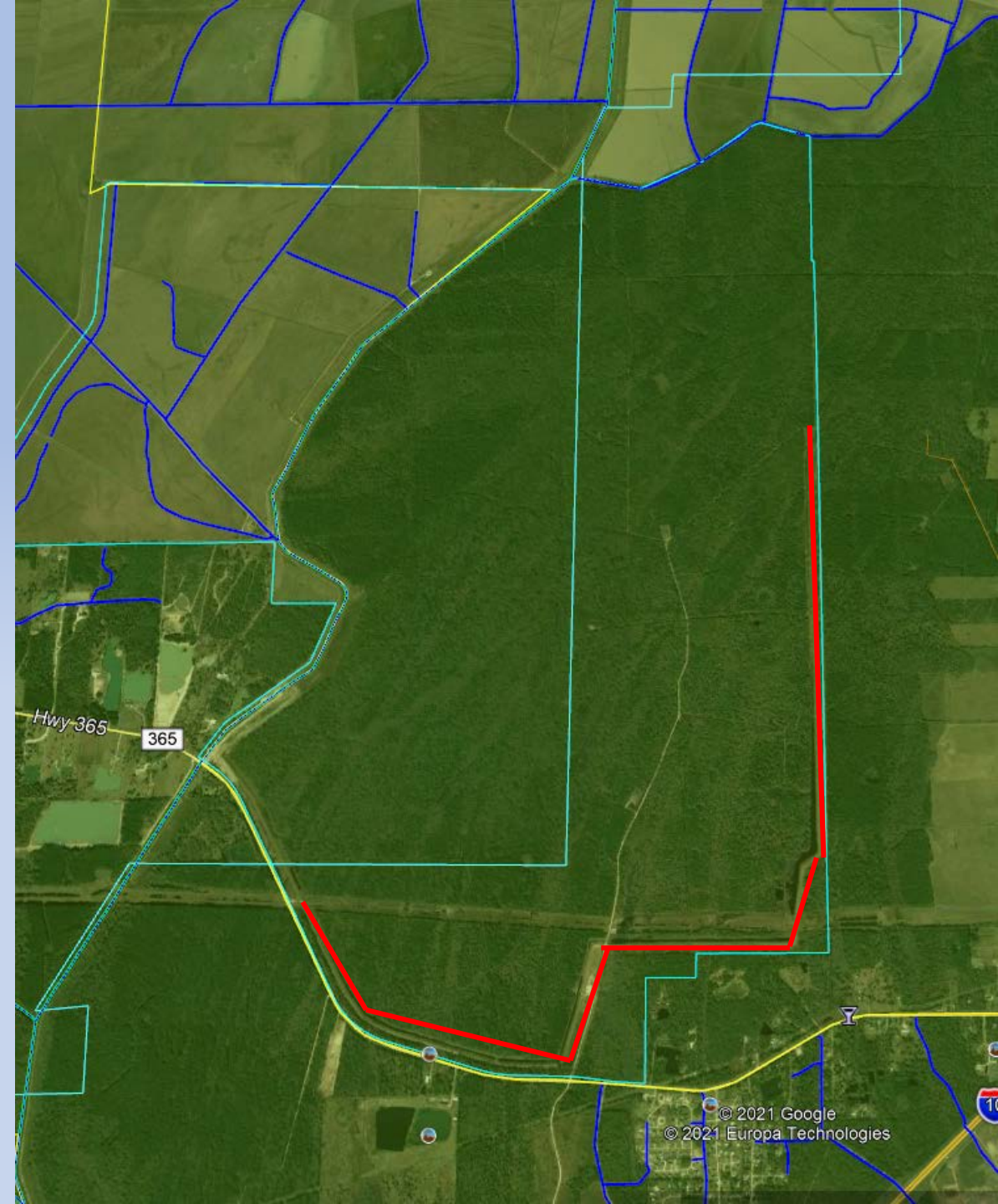
- WEST CHINA DETENTION

PLANNED

- DITCH 609 - \$6.7 MIL
- EXPANDING THE DITCH INSIDE GREEN POND
- ENLARGING GREEN POND DETENTION FACILITY
- MASTER PLAN

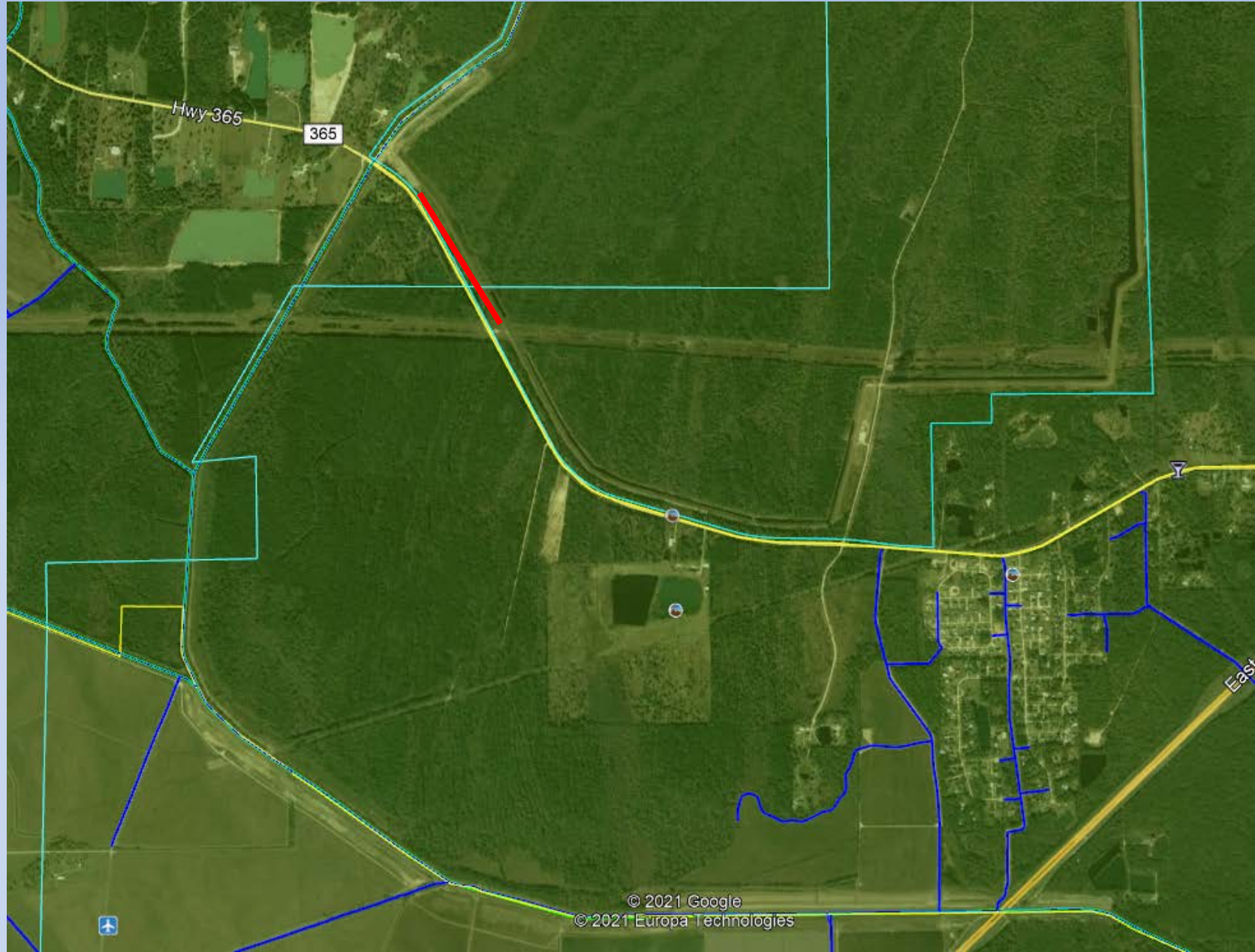
ALL-WEATHER LEVEE

- 5 MILES – ELEVATION 27.5



1,800' EMERGENCY SPILLWAY

- ELEVATION 25.0



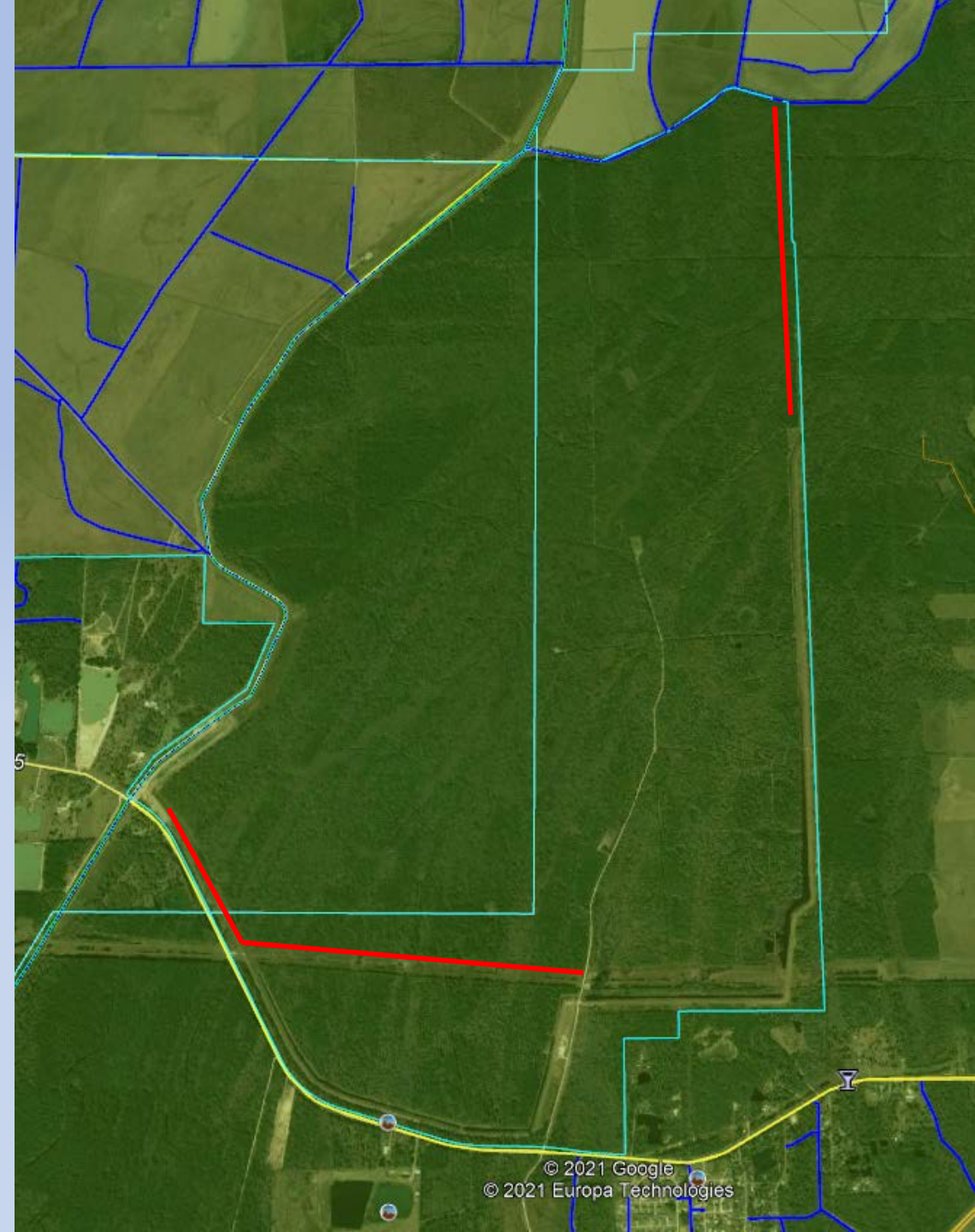
WEST CHINA DETENTION

- 34-ACRE DETENTION BASIN



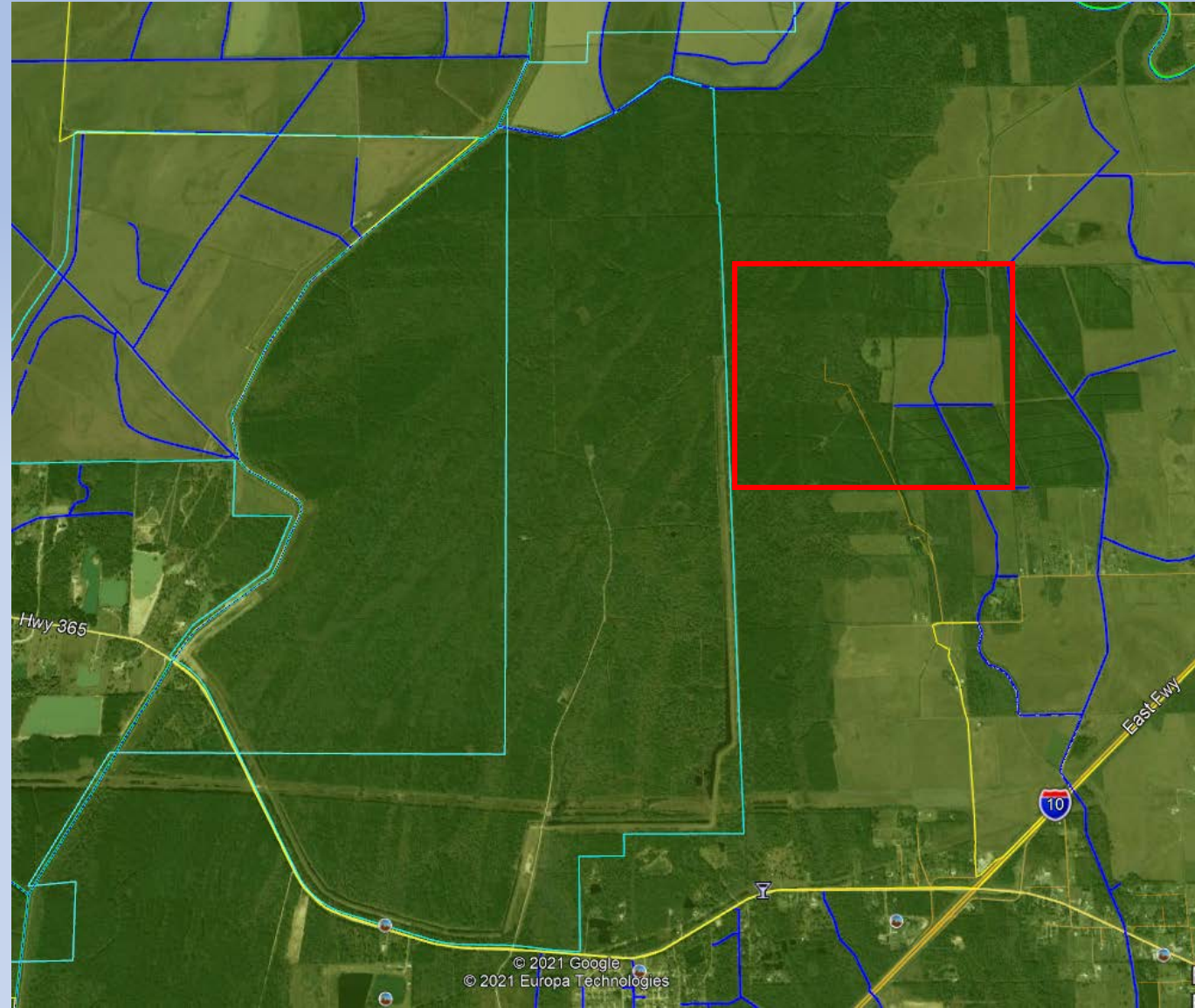
EXPANDING THE DITCH INSIDE GREEN POND

- TO MOVE WATER FROM THE WEST SIDE TO THE EAST SIDE OF GREEN POND BASIN



ENLARGING GREEN POND DETENTION FACILITY

- 737 ACRES ADDITIONAL FLOOD EASEMENT
- NEW LEVEE THAT WILL CAPTURE WATER AND DIVERT IT TO THE GREEN POND DETENTION FACILITY

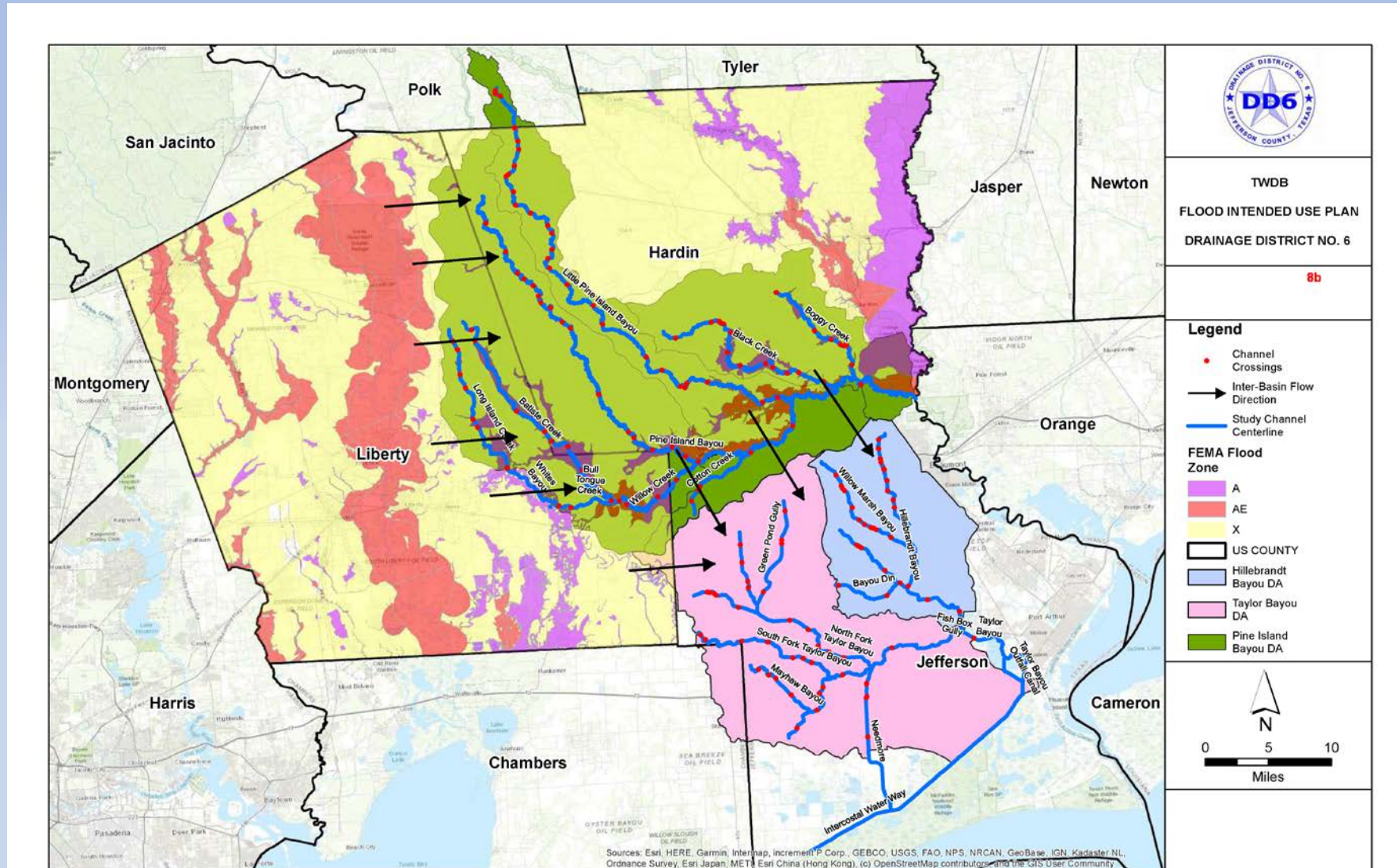


MASTER PLAN FOR PINE ISLAND BAYOU, TAYLOR'S BAYOU AND HILLEBRANDT BAYOU WATERSHEDS \$8.5 MIL - \$2.25 MIL LOCAL MATCH

- THE STUDY WILL START THIS SUMMER AND WILL TAKE TWO YEARS TO COMPLETE

- RFQ DUE ON FRIDAY 6/4/2021 AT 2:00 PM

STUDY AREA



PROJECTS IN THE FANNETT AREA / GREEN ACRES

RECENTLY COMPLETED, UNDER CONSTRUCTION & PLANNED

COMPLETED

- DITCH 407 CHANNEL WIDENING/ALL CROSSINGS/LNVA CANAL FLOOM
- DITCH 405 CHANNELIZATION PROJECT
- GREEN ACRES DETENTION POND PROJECT \$3.8 MIL
 - *NORTH OF STATE HWY 124*
 - *SOUTH OF STATE HWY 124*

UNDER CONSTRUCTION

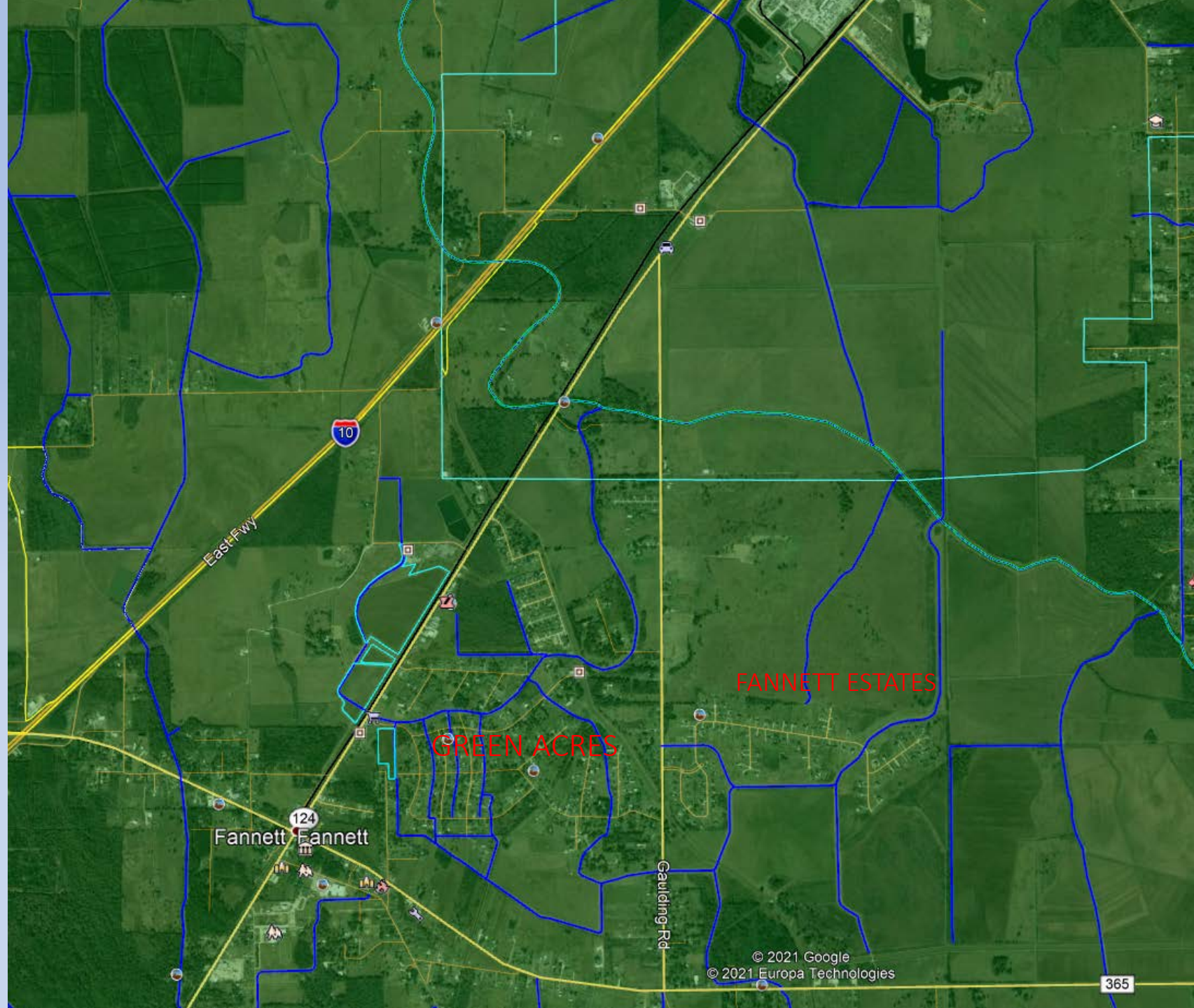
- ENLARGING GREEN ACRES DETENTION (*2-ACRE SITE, SOUTH OF STATE HWY 124 – BEHIND DOLLAR STORE*)

PLANNED

- BAYOU DIN DETENTION 650-ACRE SITE, ENLARGE DITCH 407 & BAYOU DIN
- NEW 34-ACRE DETENTION POND SOUTH OF STATE HWY 124
- MASTER PLAN

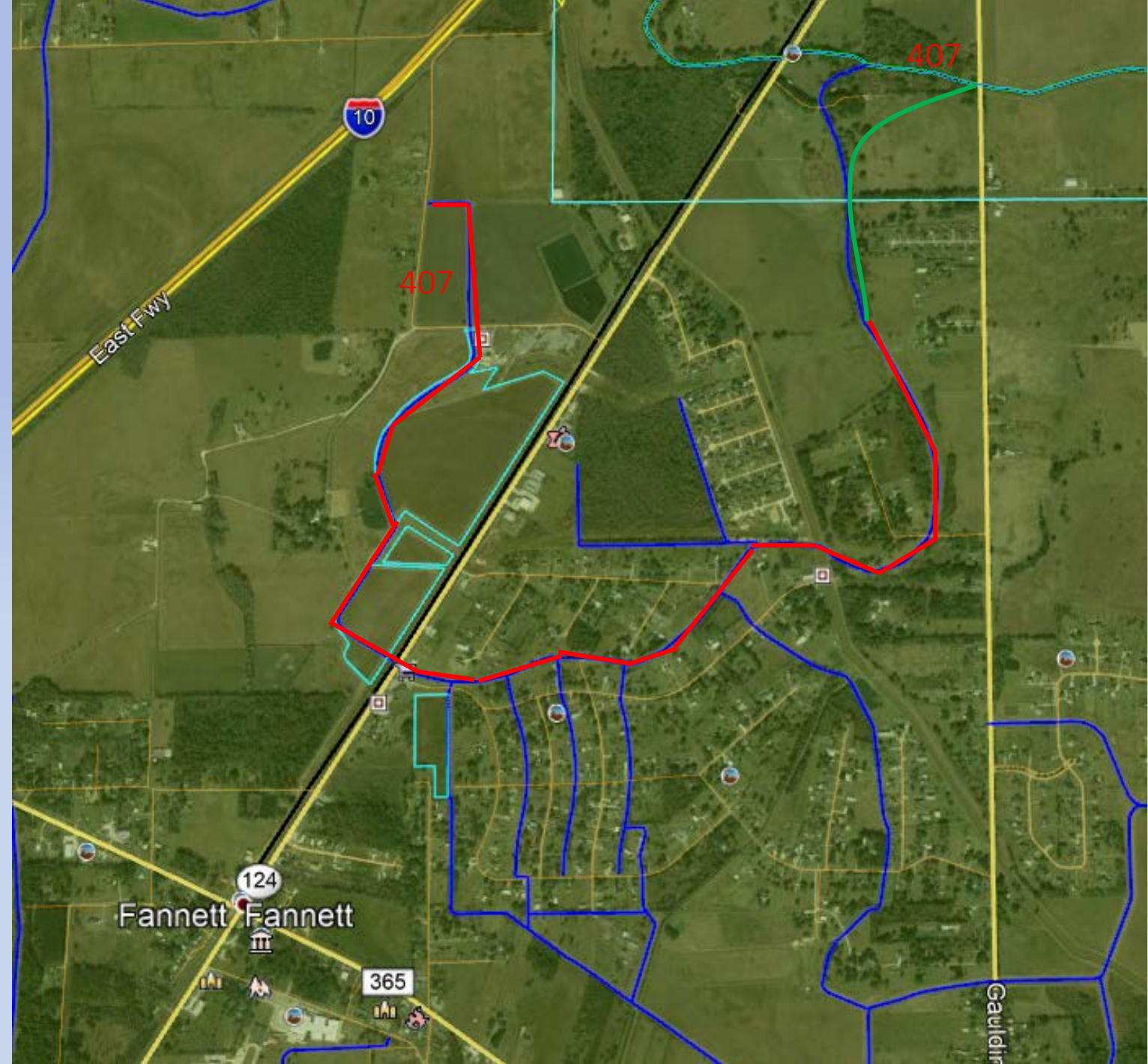
FANNETT

GREEN ACRES



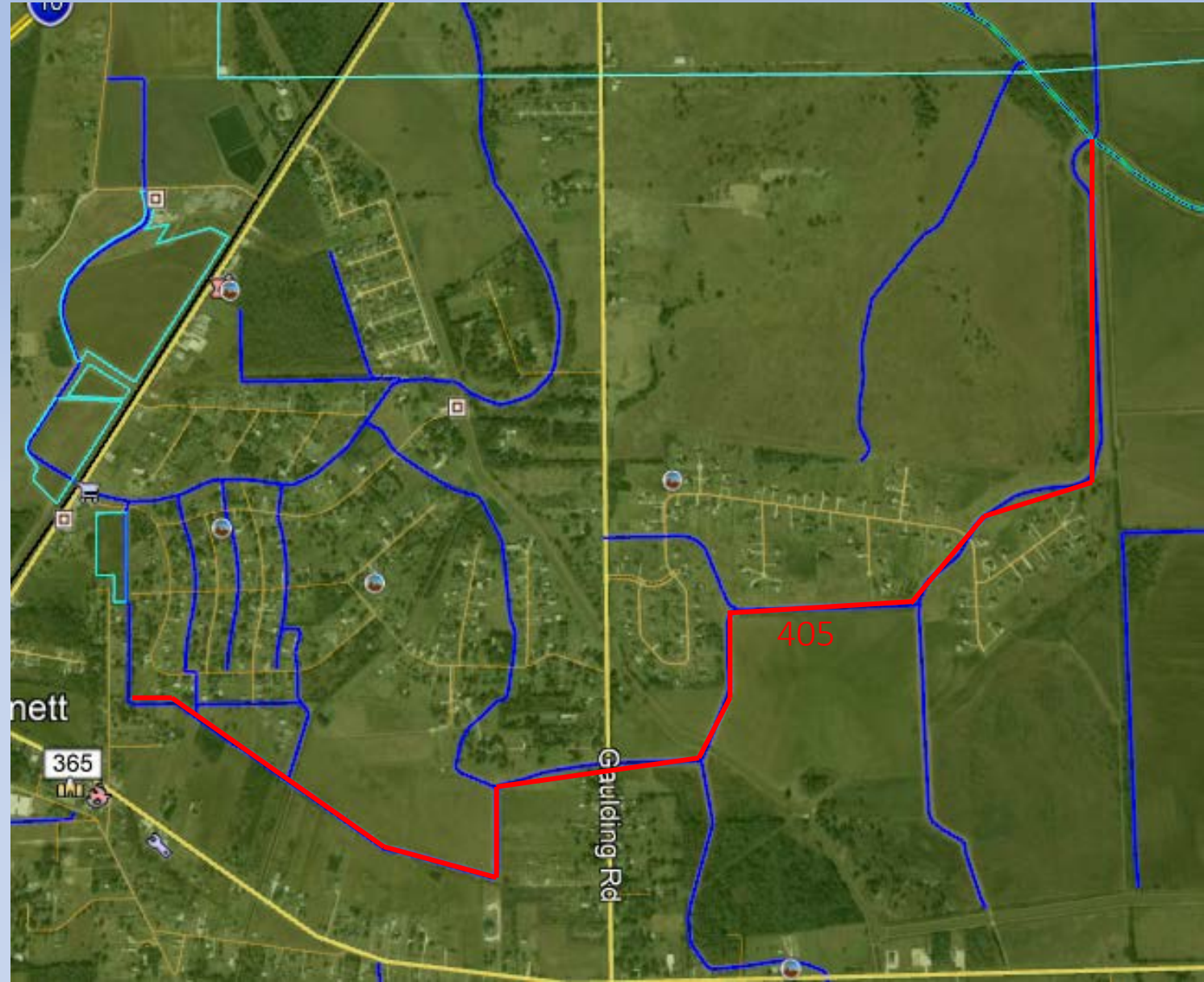
FANNETT

GREEN ACRES – DITCH 407 WIDENING PROJECT



FANNETT

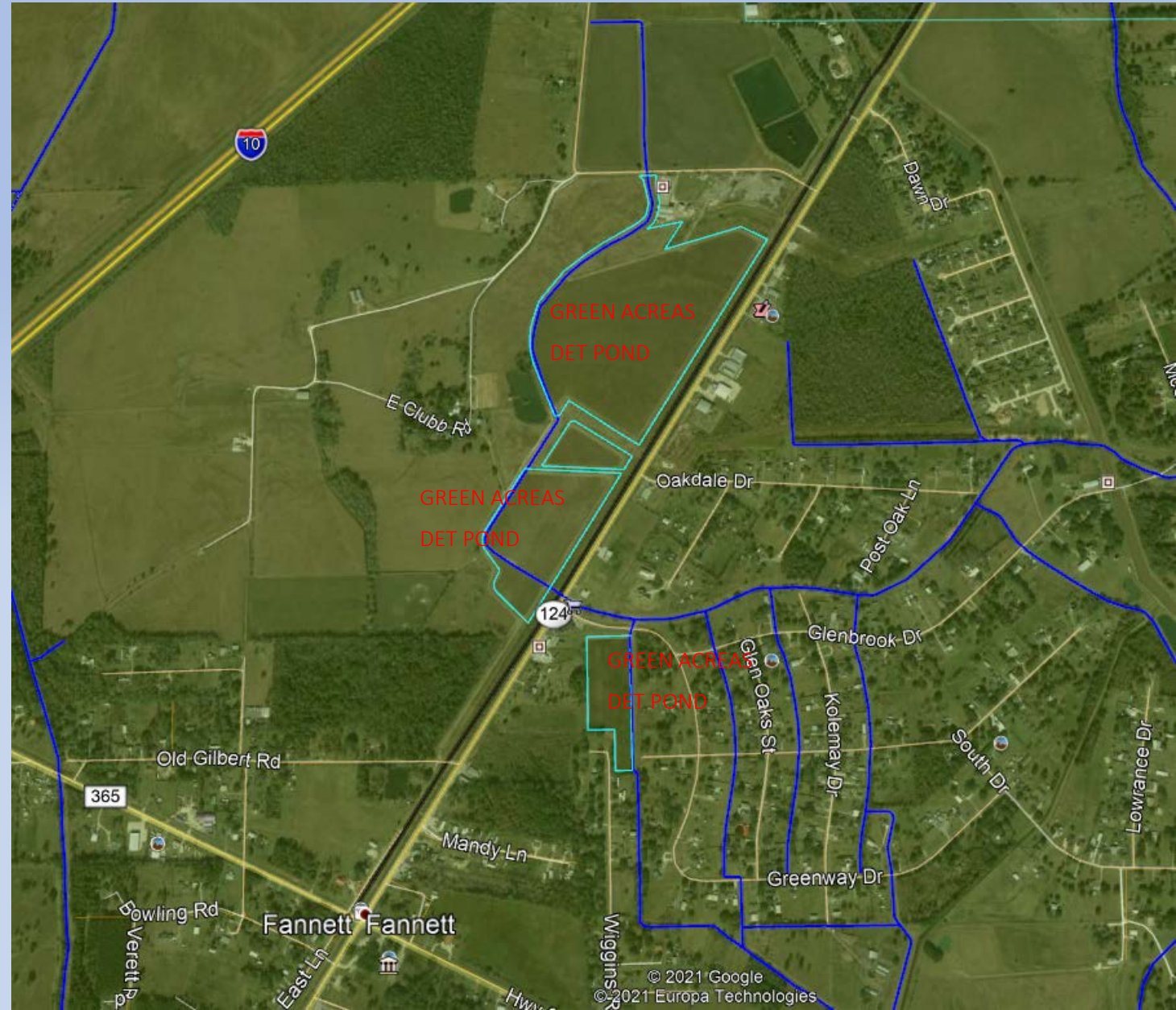
GREEN ACRES – DITCH 405 CHANNELIZATION PROJECT



FANNETT

GREEN ACRES

DETENTION POND PROJECT – \$3.8 MIL

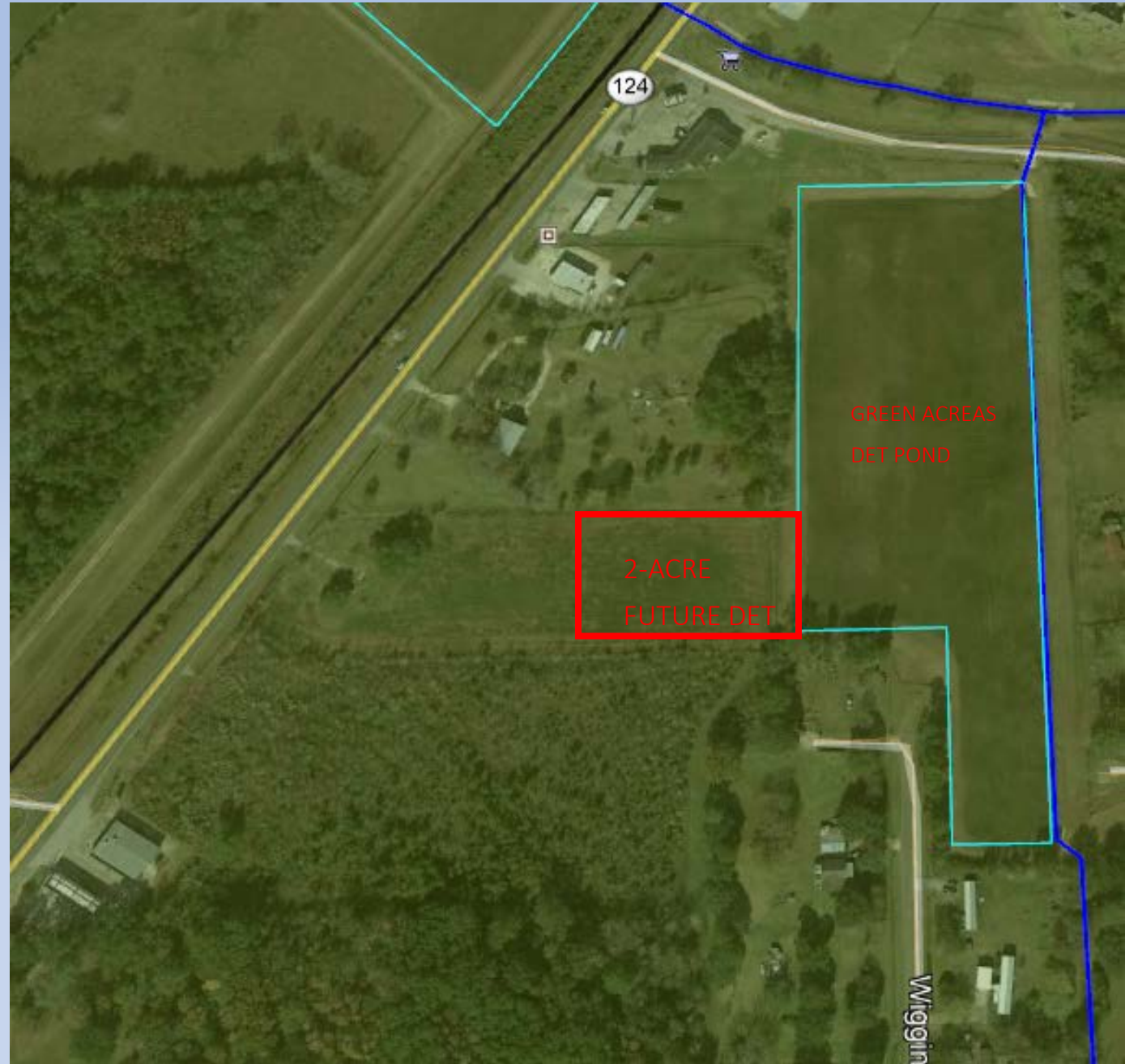


FANNETT

GREEN ACRES

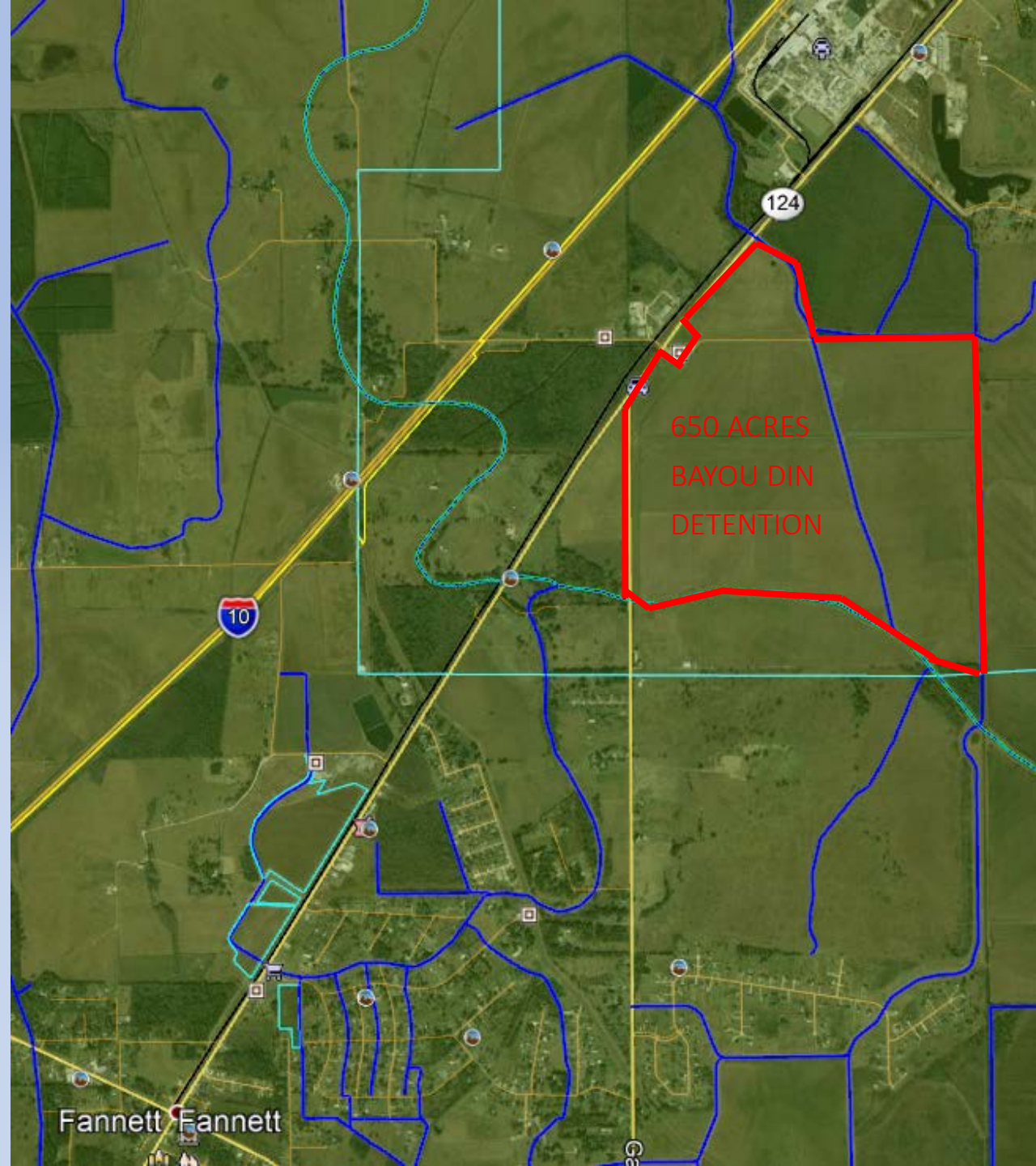
ENLARGING GREEN POND DETENTION

600



FANNETT

GREEN ACRES – BAYOU DIN DETENTION 650-ACREA SITE,
ENLARGE DITCH 407 & BAYOU DIN

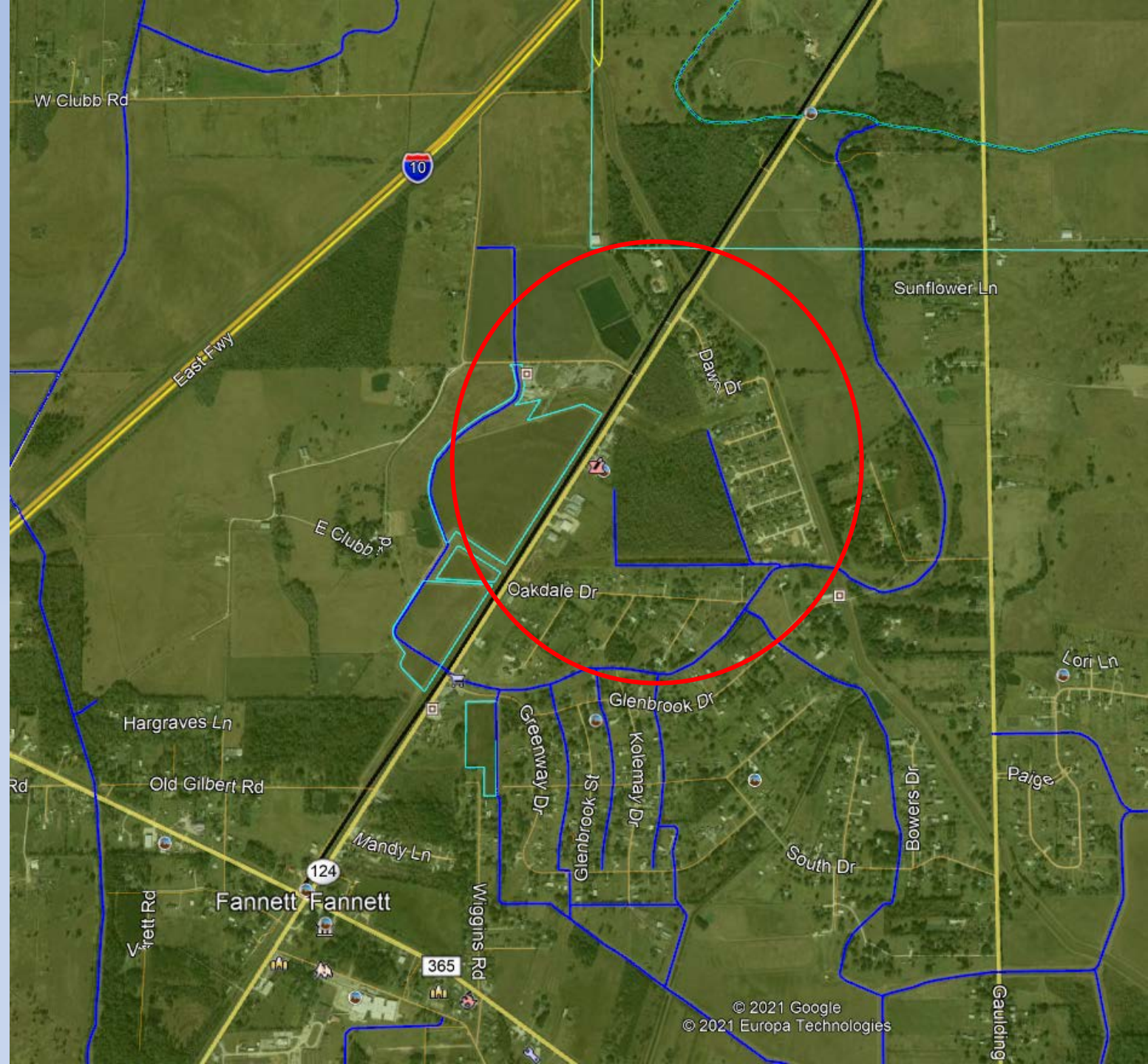


FANNETT

GREEN ACRES

NEW 34-ACRE DETENTION POND

SOUTH OF STATE HWY 124

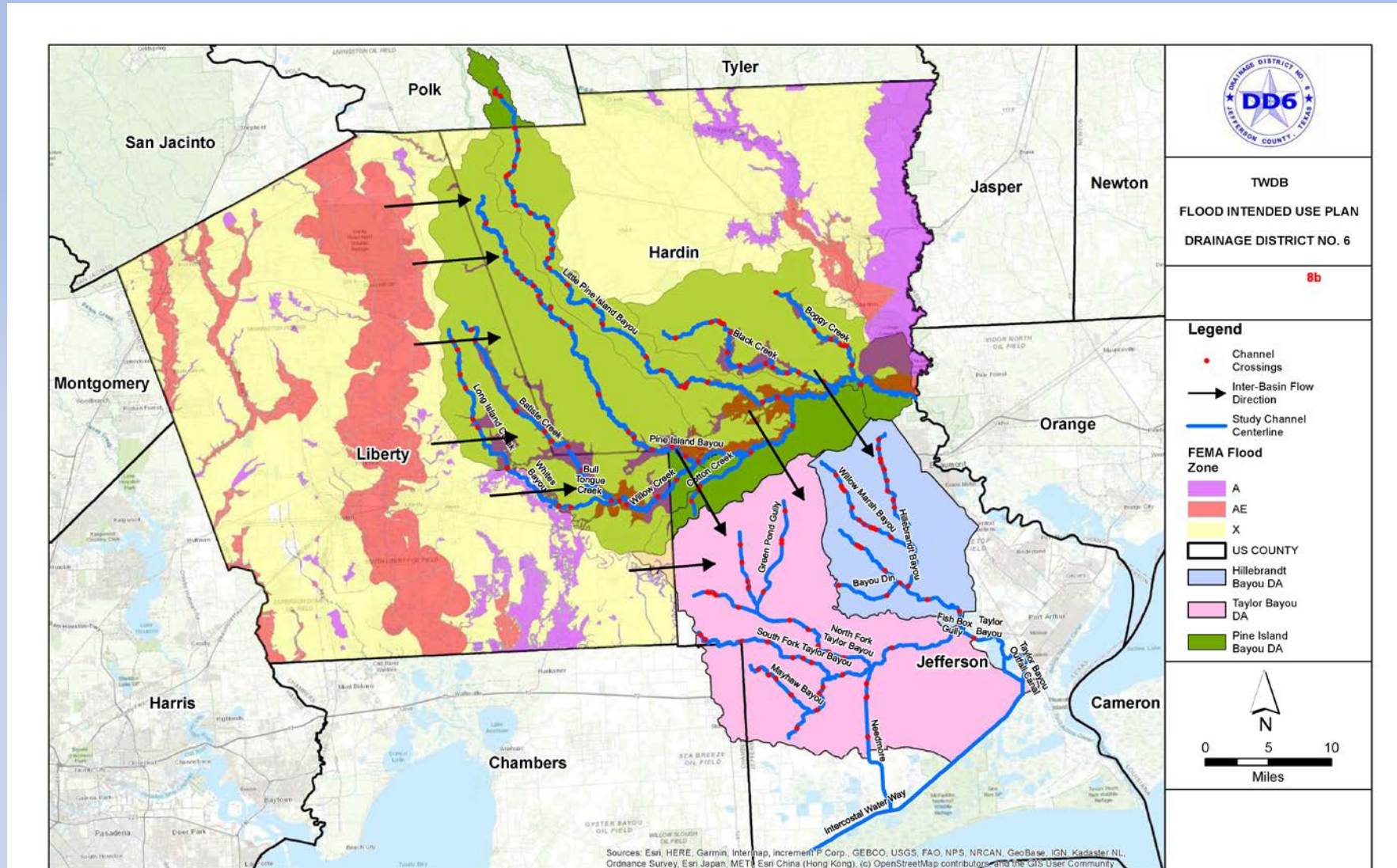


MASTER PLAN FOR PINE ISLAND BAYOU, TAYLOR'S BAYOU AND HILLEBRANDT BAYOU WATERSHEDS \$8.5 MIL - \$2.25 MIL LOCAL MATCH

- THE STUDY WILL START THIS SUMMER AND WILL TAKE TWO YEARS TO COMPLETE

- RFQ DUE ON FRIDAY 6/4/2021 AT 2:00 PM

STUDY AREA



FANNETT — 5/18/2021

GREEN ACRES PONDS



M&M PROPERTY — 5/18/2021

BAYOU DIN FUTURE POND SITE



NEEDMORE — 5/18/2021

NEEDMORE STRUCTURE

ALL GATES ARE OPEN



FANNETT — 5/18/2021

GREEN ACRES

GLEENBROOK DRIVE



THANK YOU!