

Maintenance Schedule

Mowing:

The District has 4 mowing areas that consist of North Jefferson County (Section-I), West Jefferson County (Section-II), South Central Jefferson County (Section-III), and South Jefferson County (Section-IV).

- Our goal is to cut each area's ditch tops twice per year and the ditch bottoms once per year. Occasionally more per year depending on weather and vegetation growth.

Spraying:

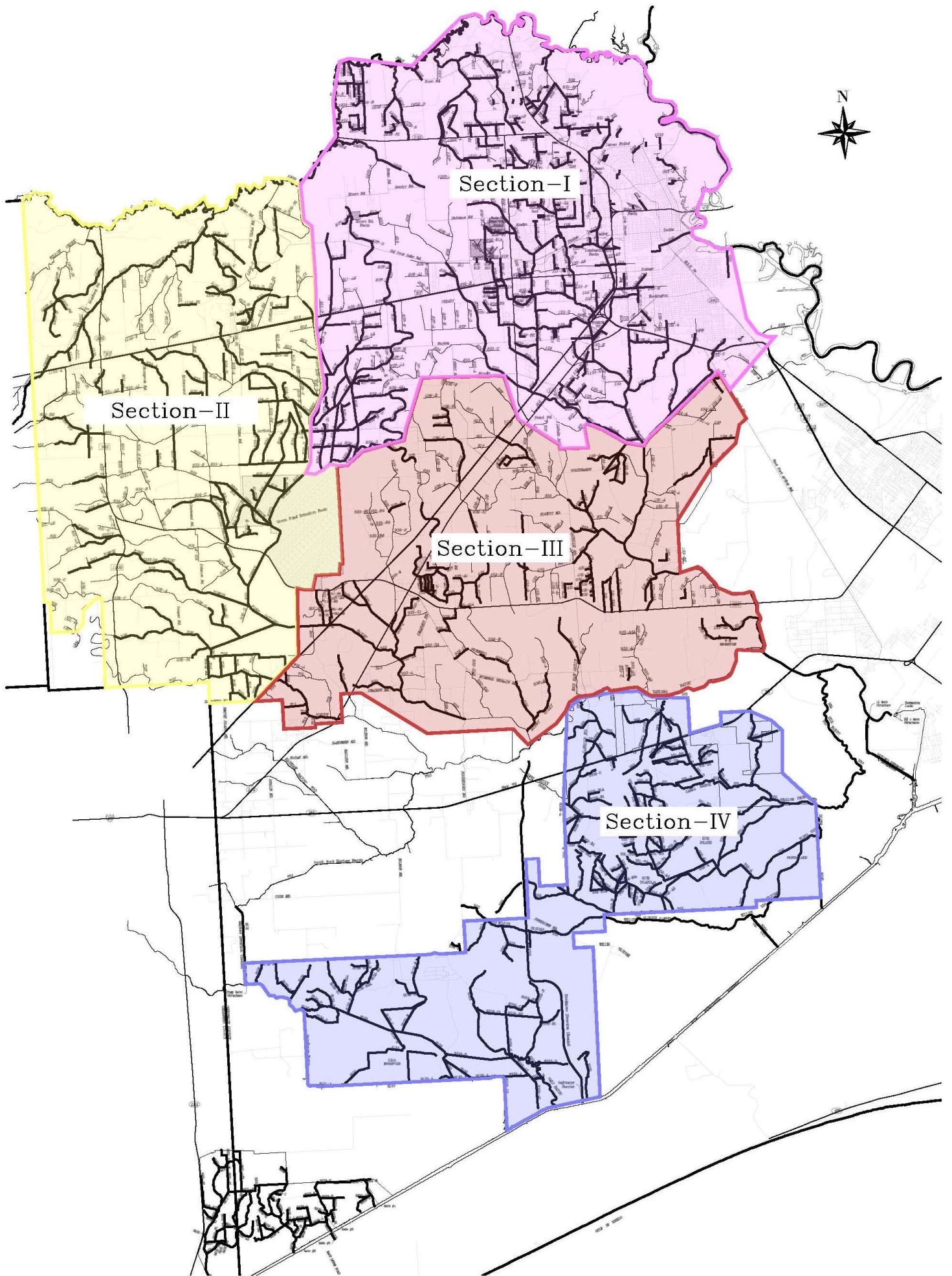
The District has 7 spray areas for our Spraying/Herbicide Application schedule that consist of White's, LaBelle, East Taylor's, Upper Hillebrandt, Fannett, China Marsh, and Beaumont. The spraying season starts the 1st week of April and ends November/first frost.

- Our goal is to spray once per year. Occasionally twice per year based on vegetation growth.

Drift:

The District has 11 Drift Control/Removal areas that are assigned to District employees to inspect.

- All staff inspect channels for debris year-round.
- Before storm events our employees ensure all crossings are free of debris, all water control structures are in good working condition, and they mobilize/stage equipment in strategic areas throughout our boundaries.

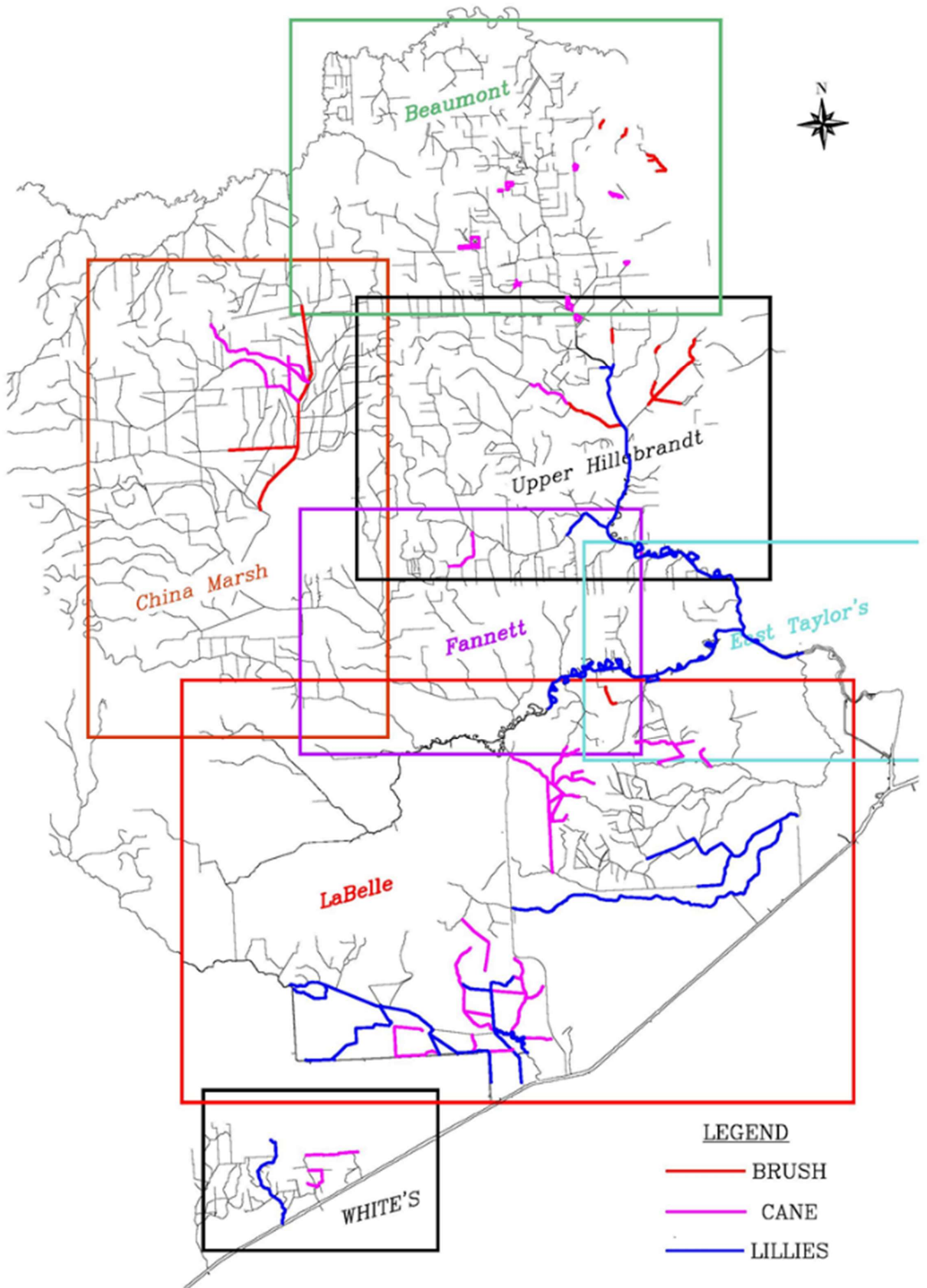


Section-I

Section-II

Section-III

Section-IV



LEGEND

-  BRUSH
-  CANE
-  LILLIES

Jefferson County
Drainage District 6
Drift Control/Removal
Assigned Areas

