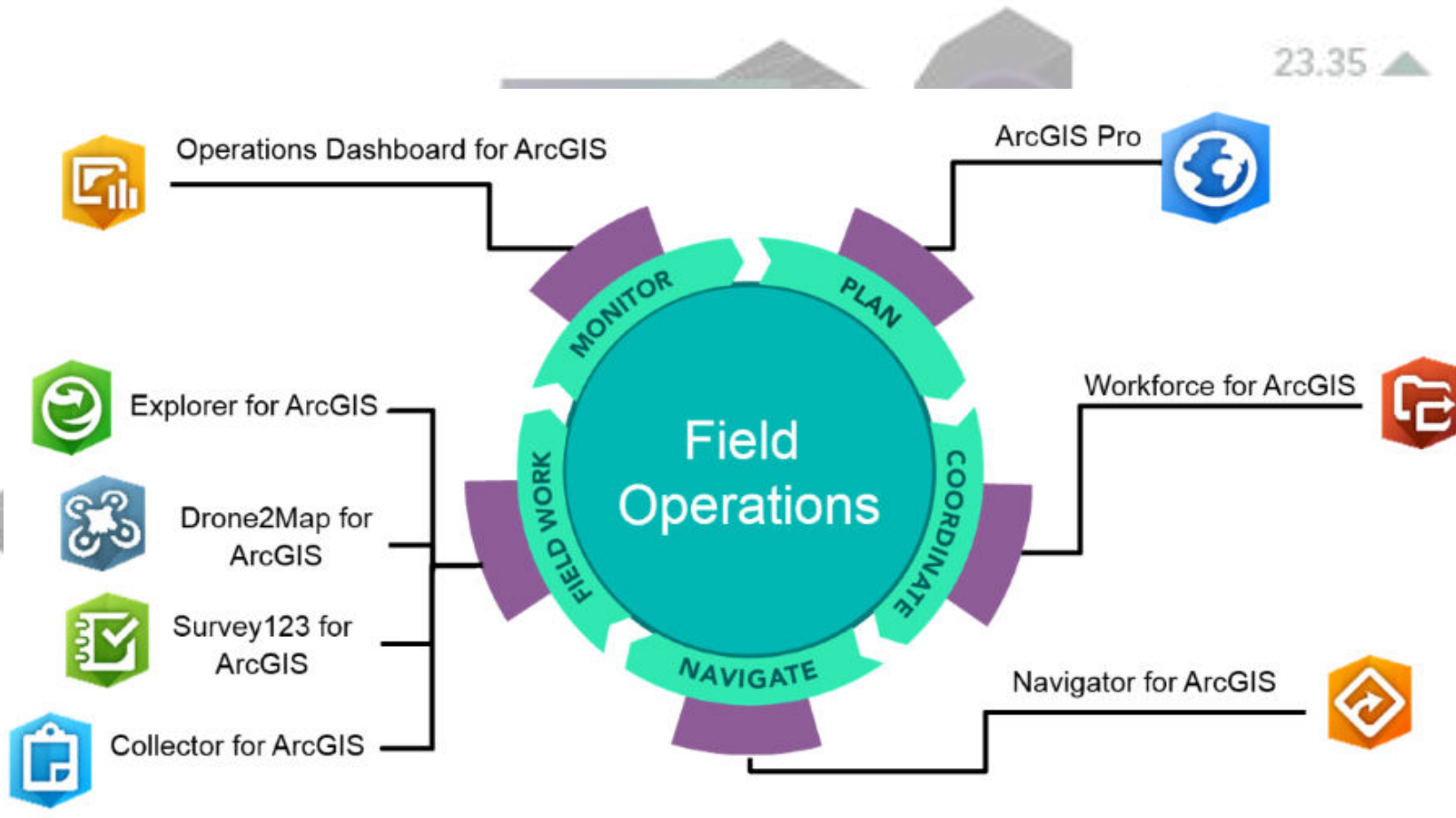




# Field Operations with GIS

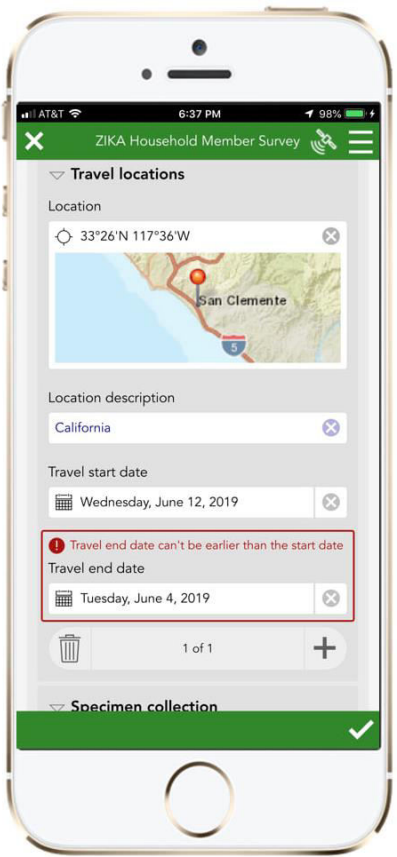
- Adopting Modern Workflows
- Digital Transformation of Operations
- Custom Dashboards to monitor in real time
- Location Tracking
- Delivery of Cost-Effective Services



# ArcPro

- Multiple Apps working together to simplify workflows

74.56



# Survey 123 & Collector

- Customize your forms
- Drop downs with a data list makes forms easy to complete
- Eliminate Potential Errors
- Use from any ISO or Android device
- Take & Store Photos with project specific sites

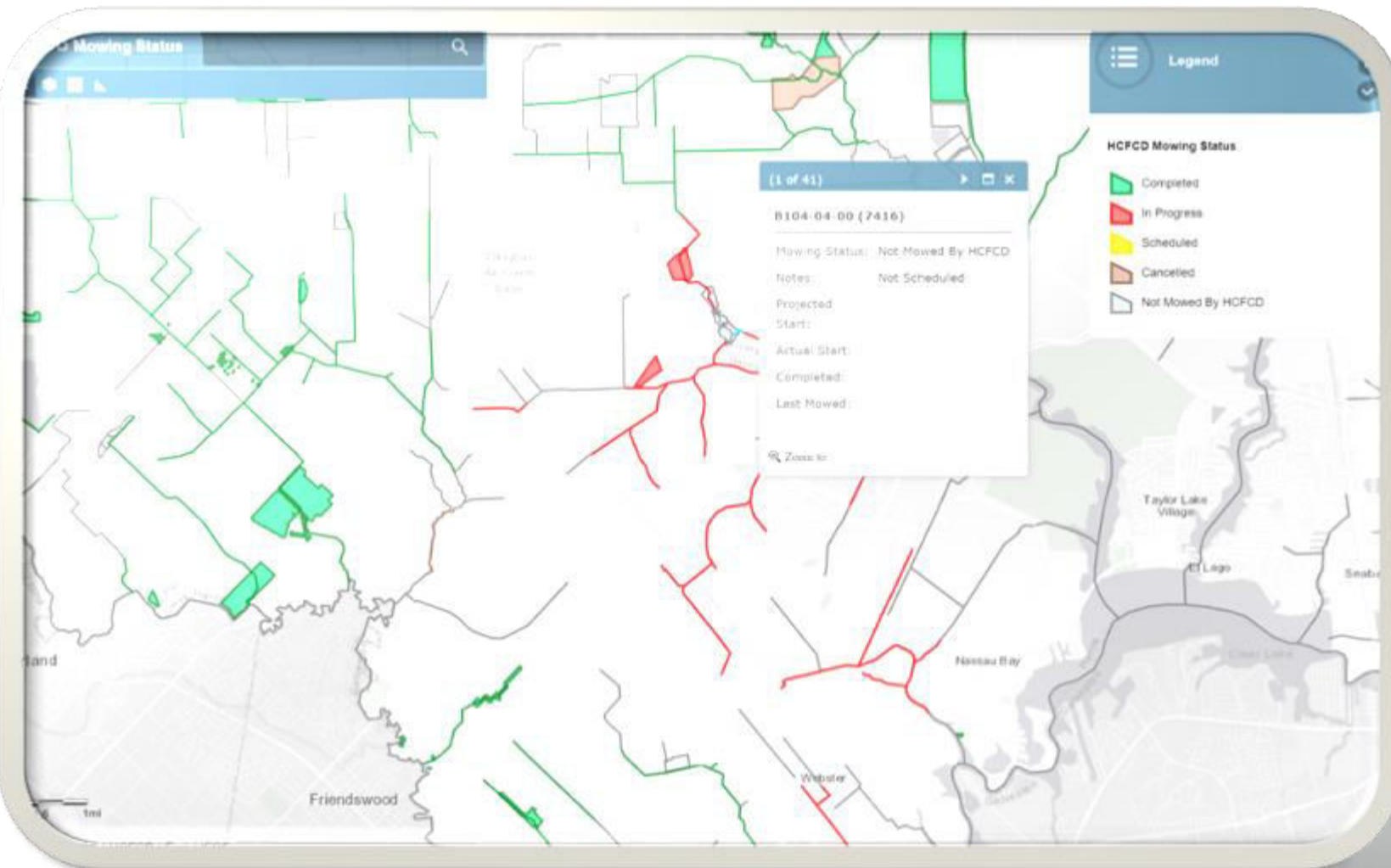


- Workforce is where it begins.
- Coordinate with Crews within the Work order.
- Don't worry about losing Material documents again.
- Get accurate data during and at the end of a project.



## Workforce

- PM issue Workorder from Web App to mobile device
- Real Time Updates
- Reports of materials List for next day
- Viewed from any mobile device

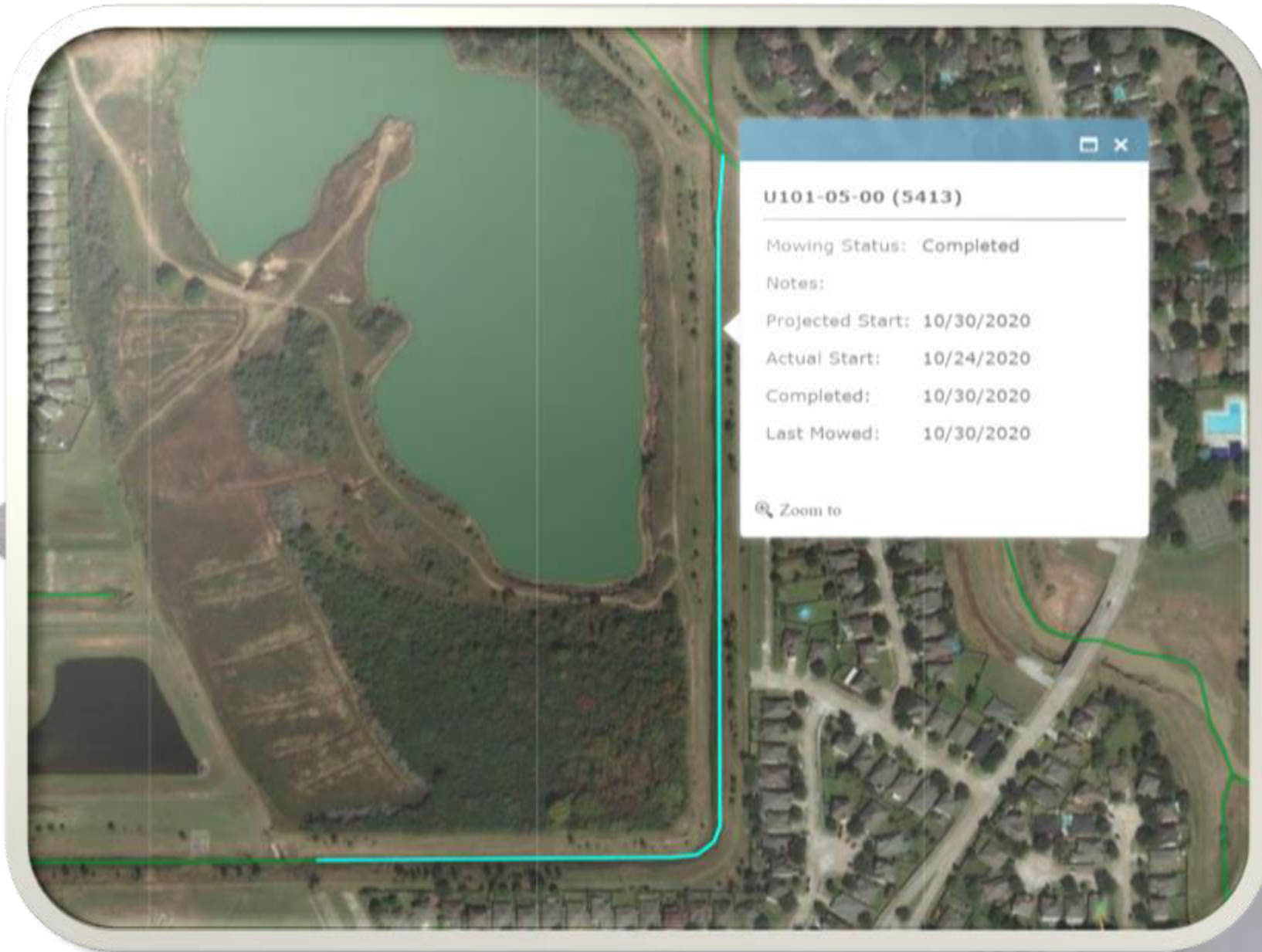


- Monitor Routes. Let the Mapping & GPS do the work.
- Adjust Work Orders on the fly or Assign priority Work orders.
- The Public Maps will give the Citizens up to date data regarding mowing schedules & show mowing in progress



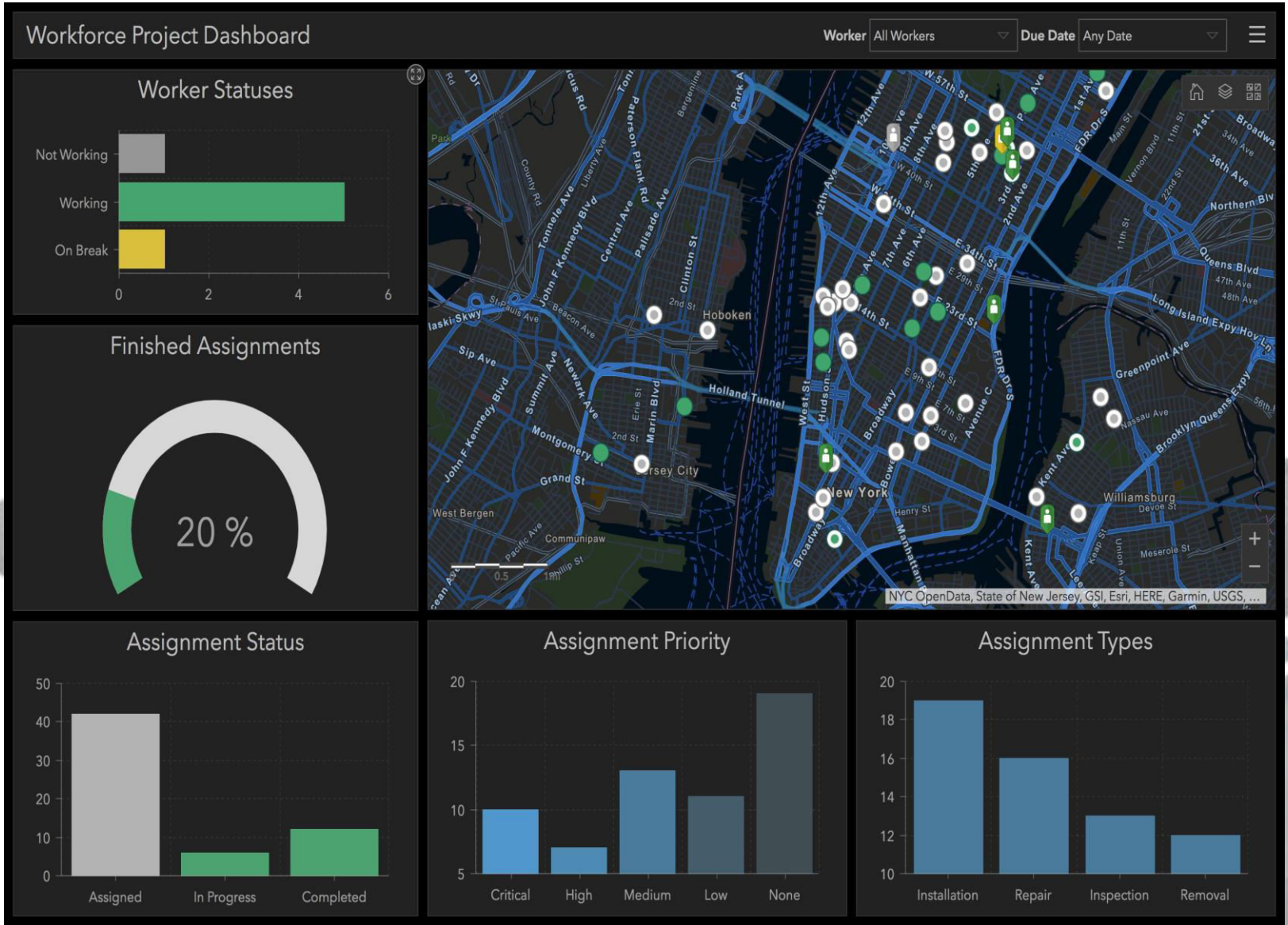
## Mapping & GPS

- Mapping & GPS working together to bring you the most current data
- Mapping what is in Progress
- Mapping Drainage Easements/Boundaries
- Easy Search by Address or Ditch number



## Mapping & GPS

- Public Maps will have the ability to customize the base maps using the latest Aerials or additional views.
- QA/QC can be performed at anytime by PM's or Administration.



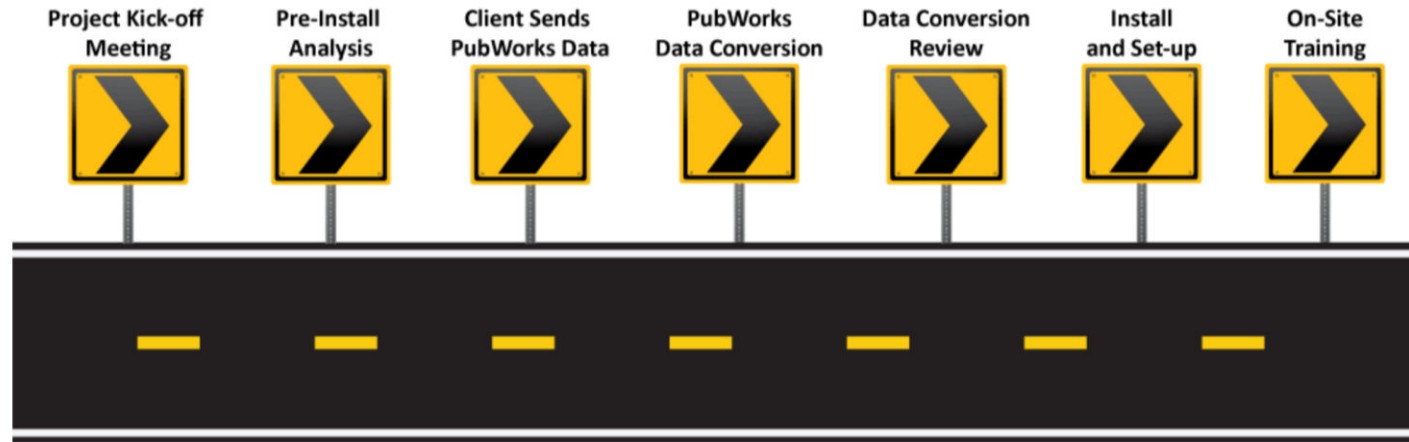
## Operations Dashboard

- View District Wide
- View Tractor Area Only
- Customize the Dashboard to fit our needs



## Implementation

## Support & Maintain



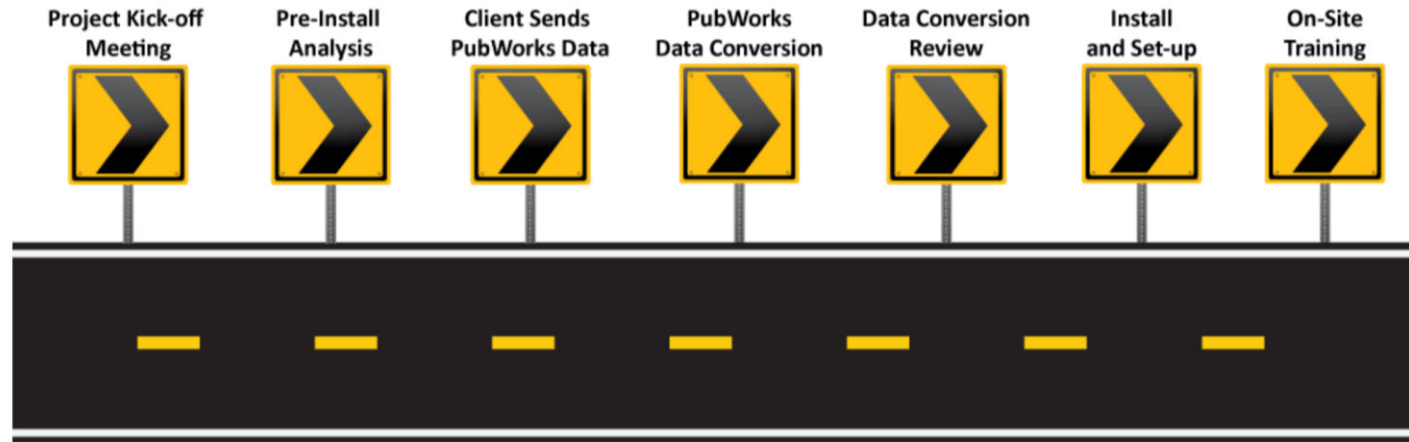
## GIS System & Support

1. Enterprise Environment
  2. Data Install
  3. Data Prep
  4. System & Data
- Maintained Perpetually

- Mapping – Consultant Completing and continuing to Support
- Equipment GPS – Currently in Place
- Training Staff – On-Site

## Implementation

## Support & Maintain



## Asset System & Support

1. System Install

2. Data Install

3. User Prep

4. System & Data

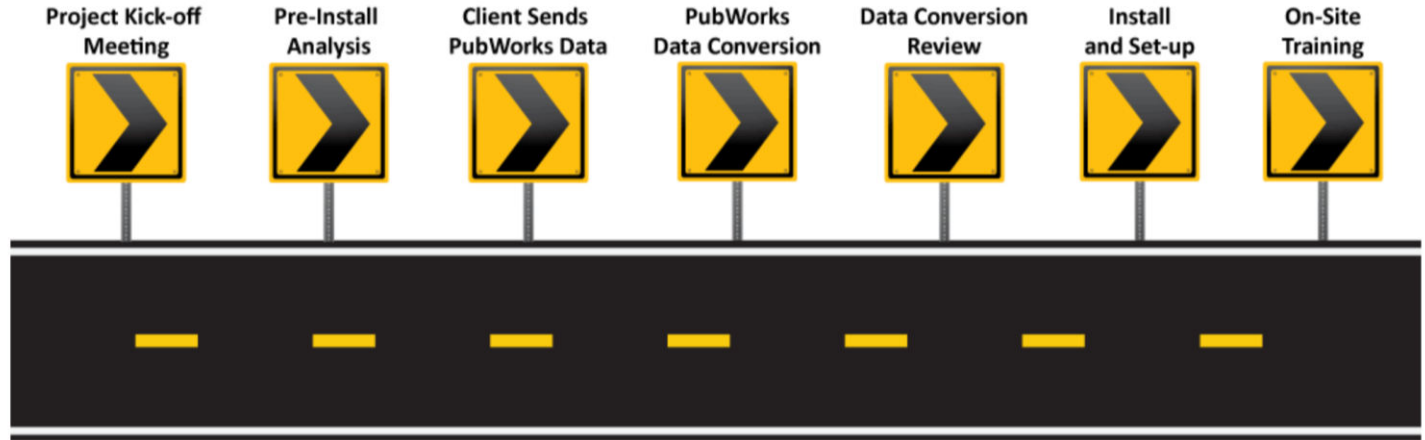
Maintained Perpetually

Example is Cityworks

- Asset System to Overlap GIS
- Track, Manage & Analyze (Employees & Labor Costs)

## Implementation

## Support & Maintain



Training will be key for every person using this system.

Training,  
Training,  
Training

In conclusion the staff thanks the Board for their continued support & we would also like your support in implementing this plan.

<https://www.hcfcd.org/Resources/Interactive-Mapping-Tools>

<https://vimeo.com/508545162>